

# ***ADDENDUM***



***Additional  
ASD S1000D  
Publication  
Techniques  
Using EAGLE***

---



## SECTION 1 ADDITIONAL ASD S1000D TECHNIQUES

### 1.0 INTRODUCTION

This addendum to the EAGLE ELT Workbook(s) provides exercises to familiarize students with additional techniques, not covered in the EAGLE workbook(s), for developing ASD S1000D data modules from the LSAR. These exercises assume that data added IAW the EAGLE workbook(s) sections 2 through 11 are present. Topics include:

1. Creating cross-references from subtask narratives to support resources;
2. Establishing Required Conditions and After Job Completion requirements;
3. Referencing Warnings, Cautions, and Notes using the Inline W,C,N subtask type;
4. Warning, Caution, and Note subtask types.

If illustrations or multi-media are used in an EAGLE created DM, a link must be created in the CSDB between the DM and the referenced entity (or entities). This is done in Arbortext CSDB by the **Demand Graphics** function.

In preparation for the upcoming exercises, perform the following as shown in Figure 1 and described below:

- Launch Arbortext CSDB for S1000D and Login.
- Open assigned Project
- Right Click on the desired DM, Select Author>>Demand Graphics. Note the (+) Icon next to the DM.
- Minimize Arbortext CSDB for S1000D.
- Launch Arbortext Editor and Login into the Arbortext CSDB for S1000D by Selecting CSDB>>Login.
- Minimize Arbortext Editor.

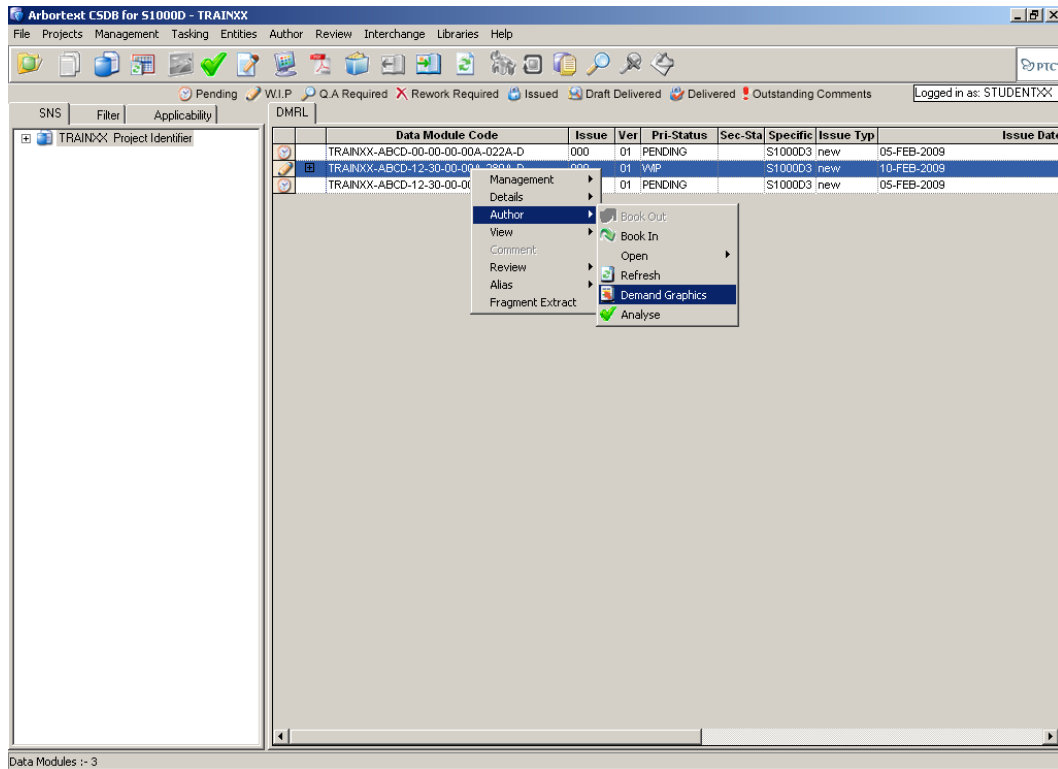


Figure 1. Arbortext CSDB for S1000D-Demand Graphics

### 1.0.1 Creating Cross References to Support Resources

The <lsaxref> element available when editing subtasks with an XML/SGML editor can be used to create cross references from narratives to support resources established for the task.

STEP To add an <lsaxref> element:

- From the Navigator Task Analysis discipline, launch the Task Analysis Finder.
- Enter '1' in the ALC search box.
- Choose the **Execute** button on the Main Toolbar.
- Select the record with LSA Control Number (LCN) of 'BIKE' and ALC of '01'.
- Choose the **Reports/Process>>View/Edit Task Information** menu entry.
- Make sure the 'AGCOCAA', 'INSPECT BICYCLE' task is selected and choose the Support Equipment tab as shown in Figure 2.

The screenshot shows the 'Task Information' window for 'Current End Item: BICYCLEXX'. The window is divided into several sections:

- End Item:** BICYCLEXX
- LSA Control Number (LCN):** BIKE
- ALC:** 1
- Type:** P
- LCN Name:** BICYCLE ASSEMBLY
- Data Module Code (DMC):** TRAINXX-ABCD-12-30-00-00A-280A-D
- Data Module Status:** RELEASED
- Task Config. Status:** (empty)
- Task Code:** AGCOCAA
- Task Identification:** INSPECT BICYCLE
- Buttons:** View RAM Failure Mode Information, Sort Tasks
- Tabs:** Task Info., **Support Equipment**, Provisioned Items, Tech. Manuals, Remarks, New Task
- Display by Item:**
  - Category Code (ICC):** 7-Peculiar SE (not in DOD Inventory), 8-Peculiar Tools (not in DOD Inventory), M-Peculiar TE (not in DOD Inventory), D-Pec Handling Equip (not in DOD Inventory)
  - Show All
  - Add Resources** button
- ICC Group A, B, and C Elements:** (empty)
- Other ICC Elements:** E-Program (Embedded SW), F-Tech Manuals, J-Forms or Records, S-Trng Matl not in DOD Inv
- Table:**

ICC	CAGE	Reference Number	Qty	Unit of Measure	Support Equipment Name
8	SE999	RS-9	1	EACH	REPAIR STAND
- Records:** 1

Figure 2. Support Equipment for Bicycle Inspection Task.

- Note the CAGE and Reference Number of the Repair Stand. These values will be used as attributes of the <lsaxref> element to create links from the narrative to the support equipment resource list in an Interactive Electronic Technical Publication (IETP).
- Close the Task Information window to return to the Task Analysis Finder.
- Choose the **Reports/Process>>View/Edit Narrative Information** menu item.
- Make sure the selected task is 'AGCOCAA', 'INSPECT BICYCLE' and the selected Subtask is '1', 'PREPARE BICYCLE FOR INSPECTION'.
- Choose the Allow Editing Checkbox to display the narrative in Arbortext Editor.

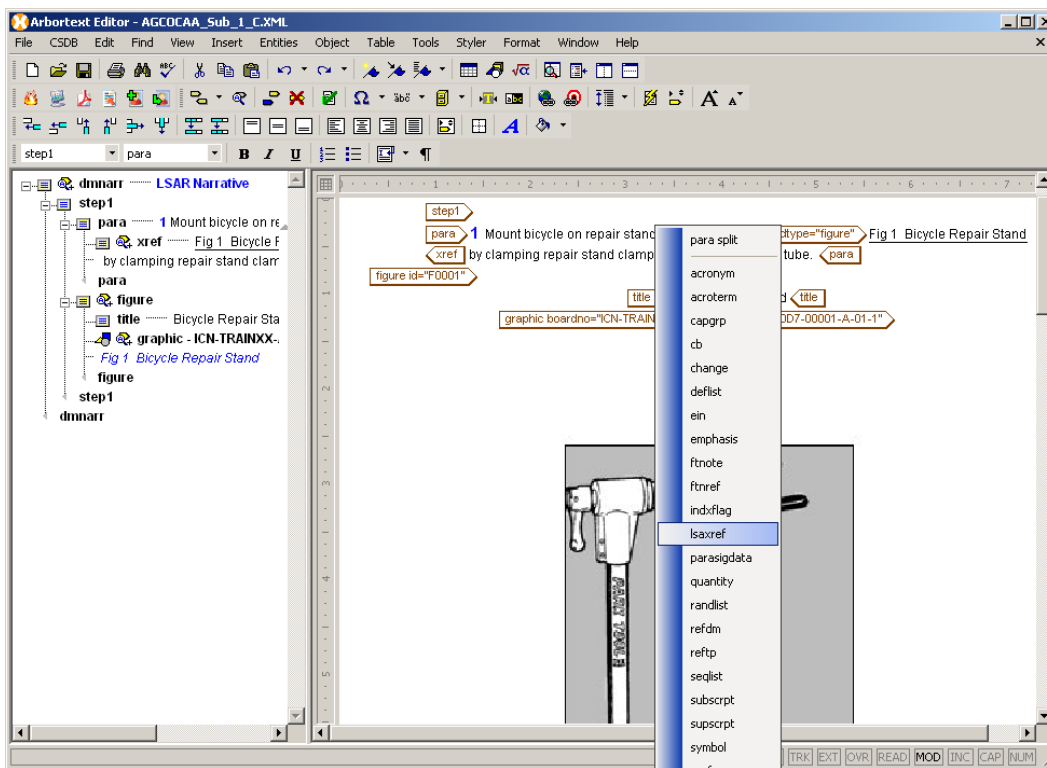


Figure 3. Adding an <lsaxref> Element.

- Place the cursor between '*Mount bicycle on repair stand*' and the <xref xrefid="F0001" xidtype="figure"> element (leave a space).
- Choose the Enter key on the keyboard and right click on the Isaxref element as shown in Figure 3.

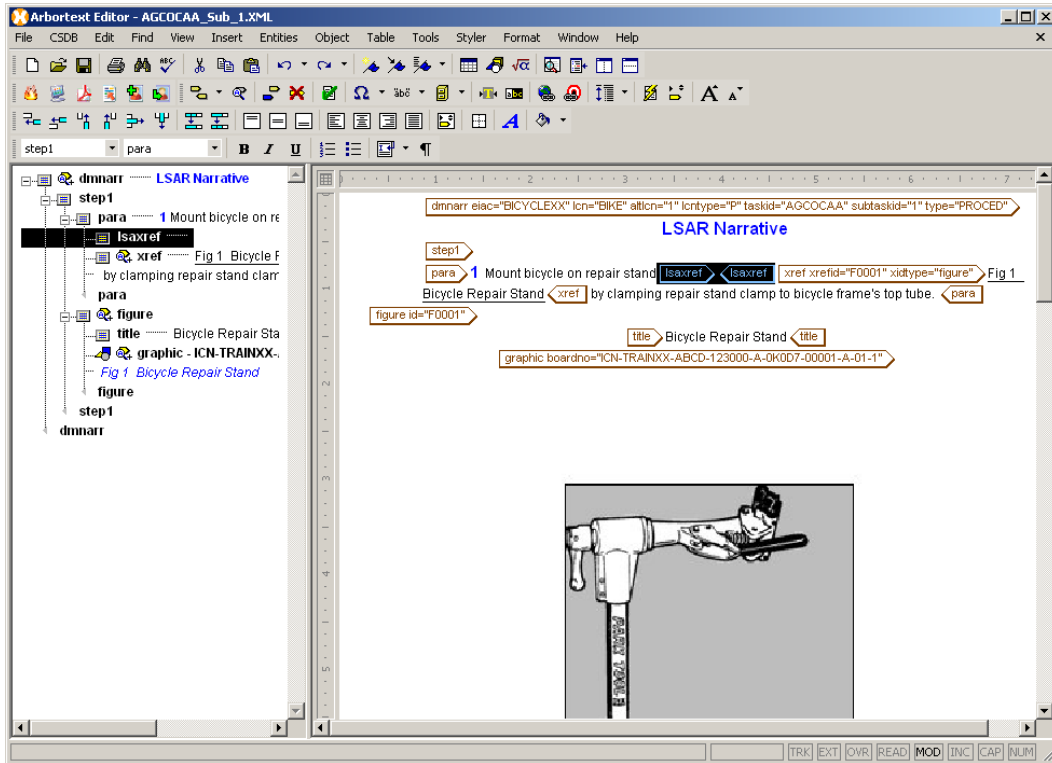




Figure 4. <isaxref> Element Selected.

- Select the Isaxref element that was inserted in the previous step as shown in Figure 4.
- Choose the **Modify Attributes** button (  ) on the Arbortext Editor Toolbar. The Modify Attributes Window is displayed as shown in Figure 5.

Note: Always use the File>> Save or the Save button (  ) from the Arbortext Editor Toolbar when saving data to EAGLE. Never use the CSDB>>Save method.

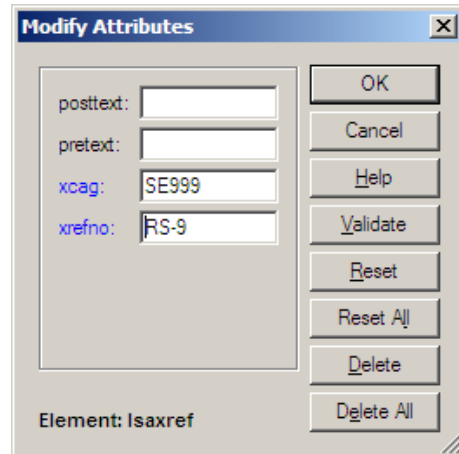



Figure 5. Modify Attributes Window.

- Enter 'SE999' for the xcag attribute and 'RS-9' for the xrefno attribute.
- Choose the **OK** button on the Modify Attributes Window to enter the attributes for the <Isaxref> element.
- Choose the **Save** button (  ) on the Arbortext Editor Toolbar to save the tagged narrative to the EAGLE DB.

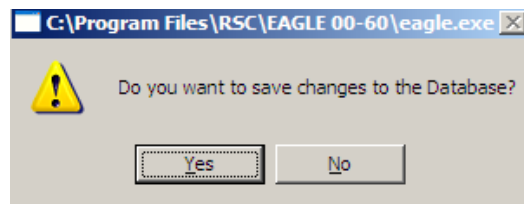


Figure 6. Save to Database Dialog Box.

- Choose the **Yes** button on the Save to Database Dialog Box (Figure 6) to complete the save.

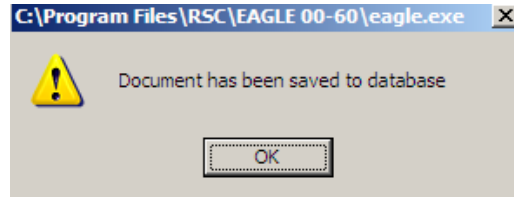


Figure 7. Document Has Been Saved to Database Dialog Box.

- Choose the **OK** button to acknowledge that the subtask has been saved successfully (Figure 7).
- Close the document in the Arbortext Editor, NOT the Arbortext Editor. This will allow you to remain logged into the Arbortext CSDB for later exercises.
- Minimize the Arbortext Editor
- Close the EAGLE Narrative Editor window.

The cross reference created can be previewed as a PDF document from EAGLE by releasing the data module then, with the corresponding data module code (DMC) selected in the Data Module Release window, choosing the **Reports/Process>>View Data Module** menu item or the **View** button on the Function Specific Toolbar. For instructions on releasing a data module, refer to section 5 of the EAGLE Workbook.

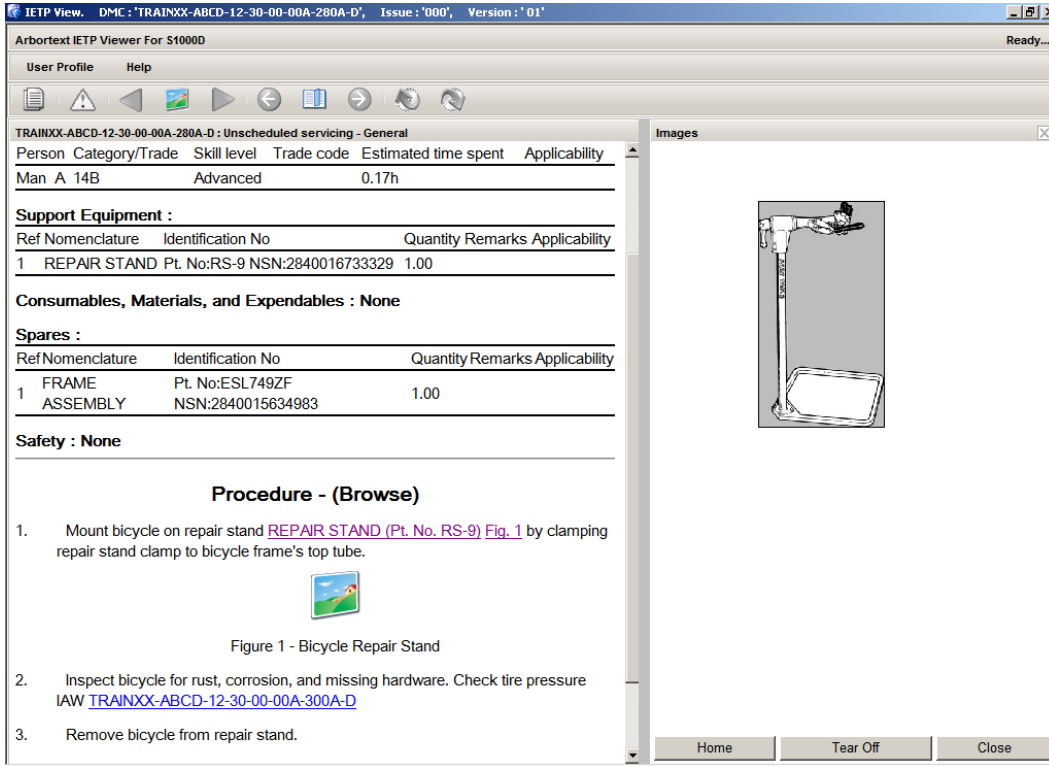




Figure 8. IETP Preview of Data Module Showing Support Equipment Cross Reference.

The cross reference created can be previewed in an IETP by releasing the data module, then in Arbortext CSDB for S1000D, with the DMC selected, choosing the Preview IETP button (  ) on the Main Toolbar. Figure 8 shows the data module in Arbortext IETP Viewer for S1000D.

Note: After releasing the DM from Eagle, in Arbortext CSDB for S1000D, with the DMC selected, always refresh the DM. This can be done by Author>>Refresh or by clicking the Refresh button  (7<sup>th</sup> from the right).

### 1.0.2 Establishing Required Conditions and After Job Completion Requirements

When a task has been linked to a DMC, a Required Conditions Data Module Reference to that DMC can be established in another data module by creating a subtask reference (to any subtask used in the task linked to the DMC) and assigning a subtask type of 'Required Conditions'. Likewise, Requirements After Job Completion can be established by creating a subtask reference to a subtask used in a task linked to a DMC.

The following exercises will:

- Create a new task in the ALC '1' version of the bicycle.
- Create a required condition (to inspect the bicycle) and a requirement after job completion (also to inspect the bicycle) using the procedure described above.
- Create a data module and link it to the task.

**STEP** From the Task Analysis Finder, create a new task:

- Select the record with LSA Control Number (LCN) of 'BIKE' and ALC of '01'.
- Choose the **Reports/Process>>View/Edit Task Information** menu entry.
- Choose the **New Task** tab.

Reference Task Finder Current End Item: BICYCLEXX

End Item: BICYCLEXX LSA Control Number (LCN): BIKE ALC Type: 0 LCN Name:

Task Function: J, Repair Sort by Codes:  Task Code: Task Identification:

Select a task below to use as the basis for the reference task.


End Item	LSA Control Number (LCN)	ALC	Type	Task Code	Task Identification
BICYCLEXX	BIKE	0	P	JGCOAAA	REPAIR FLAT TIRE
BICYCLEXX	BIKE	0	P	JGDOAAA	REPAIR BROKEN CHAIN
BICYCLEXX	BIKE	0	P	JGDOAAB	REPAIR MISALIGNED CHAIN

Records: 3

OK Cancel Query Help

Figure 9. Reference Task Finder.

- Choose the **Reference an Existing Task** button. The Reference Task Finder (Figure 9) is displayed. Figure 9 Shown after the following has been entered and the Query performed.
- Enter '0' in the ALC search criterion box.
- Choose 'J, Repair' from the Task Function dropdown list.
- Choose the **Query** button on the Reference Task Finder to return tasks meeting the search criteria.
- Select the record with Task Identification of '*REPAIR BROKEN CHAIN*'.
- Choose the **OK** button on the Reference Task Finder.

- Enter 'JGCOAAB' for the Task Code.
- Choose the **Done** button on the Task Information Window to create the reference task.
- Choose the **Reference Information** Tab on the Task Information Window.
- Choose the **Break Reference Task Link** button to break the reference, *effectively copying the task from ALC '0' to ALC '1'*.
- Close the Task Information Window.
  
- Select **Reports/Process>>View/Edit Subtask Information** menu item.
- Make sure the 'REPAIR BROKEN CHAIN' task is selected. Note Subtask 1 is a Reference subtask.
- Choose the **Reference Information** tab.
- Choose the **Break Reference Subtask Link** button to break the subtask reference, *effectively copying the subtask from ALC '0' to ALC '1'*.
- Close the Subtask Information Window.
  
- Select **Reports/Process>>View/Edit Narrative Information** menu item. The Narrative Editor Window is displayed.
- Make sure the 'REPAIR BROKEN CHAIN' task and Subtask 1, 'REPAIR BROKEN CHAIN' are selected.
- Choose the **Allow Editing** checkbox to open the subtask in the Arbortext Editor.
- Choose the **Save** button (  ) on the Arbortext Editor Main Toolbar to save the tagged narrative.
- Choose the **Yes** button on the Save to Database Dialog Box (Figure 6) to complete the save.
- Choose the **OK** button to acknowledge that the subtask has been saved successfully (Figure 7).
- Close the document in the Arbortext Editor.
- Minimize the Arbortext Editor.
- Close the EAGLE Narrative Editor window.

Subtask Information Current End Item: BICYCLEXX

End Item: BICYCLEXX    LSA Control Number (LCN): BIKE    ALC Type: 1    LCN Name: BICYCLE ASSEMBLY

Data Module Code (DMC):

Task Code: JGCOAAB    Task Identification: REPAIR BROKEN CHAIN    Subtask: 1    Subtask Identification: REPAIR BROKEN CHAIN

Subtask Information | Reference Information | Personnel | Workload | Video | **New Subtask**

Enter Subtask Identification and Subtask Number

Recommended Action Verbs: Access, Accomplish, Achieve, Acknowledge, Actuate

Subtask Identification (Optional): PREPARE BICYCLE FOR INSPECTION

Subtask Numbering (REQUIRED)

New Subtask No.     Enter as FIRST Subtask

OR     Enter as BETWEEN Existing Subtasks

Enter as LAST Subtask

Create a Reference Subtask (Optional)

Reference an Existing Subtask

Done    Clear    Subtask Type (DMC Classification): Required Conditions (REQCOND)

Figure 10. Subtask Information Window – Adding Required Conditions.

STEP Create Required Conditions and Requirements After Job Completion as follows:

- Select the record with LSA Control Number (LCN) of 'BIKE' and ALC of '01' in the Task Analysis Finder.
- Select **Reports/Process>>View/Edit Subtask Information** menu item.
- Make sure the 'REPAIR BROKEN CHAIN' task is selected.
- Choose the **New Subtask** tab.
- Choose the **Enter as FIRST Subtask** radio button on the Subtask Information Window (Figure 10).
- Choose the **Reference an Existing Subtask** button on the Subtask Information Window (Figure 10). The Reference Subtask Finder is displayed.
- Enter '1' in the ALC search criterion box.
- Select 'A, Inspect' from the Task Function dropdown list.
- Choose the **Query** button on the Reference Subtask Finder.

- Select *any* subtask record with ALC of '1' and Task Code of 'AGCOAA'.
- Choose the **OK** button on the Reference Subtask Finder.
- Select 'Required Conditions (REQCOND)' from the Subtask Type (DMC Classification) dropdown list.
- Choose the **Save** button on the Main Toolbar.

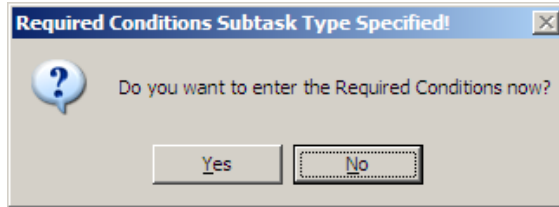


Figure 11. Enter Required Conditions?

- When prompted "Do you want to enter the Required Conditions now?" as shown in Figure 11, choose the **Yes** button. If you are using DEF STAN 00-60 V8 ELT, the Task/Subtask Associated Narrative Window is displayed. Close this window.

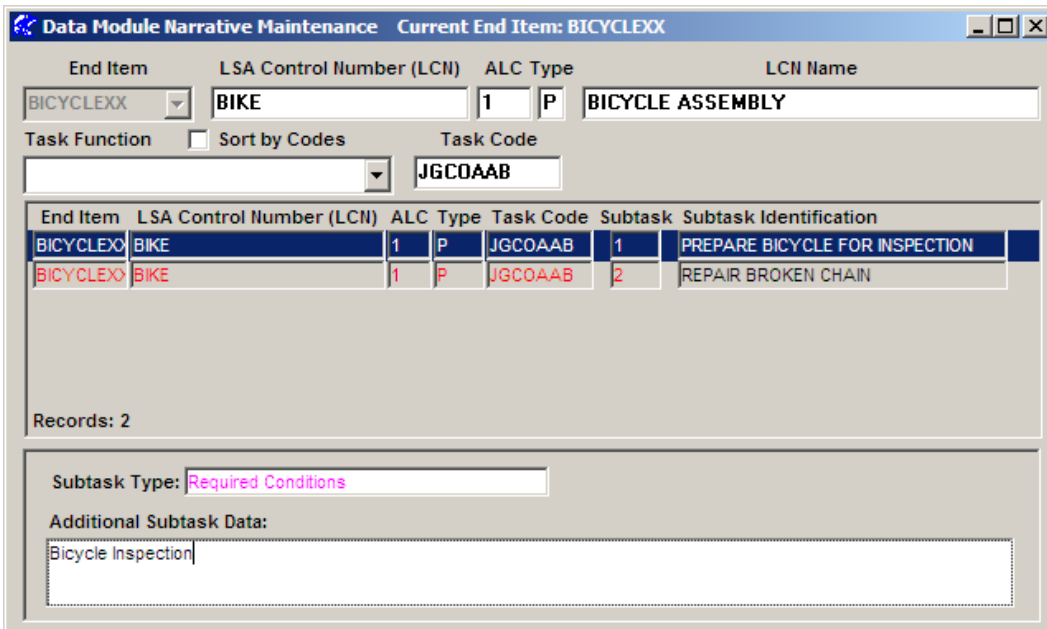
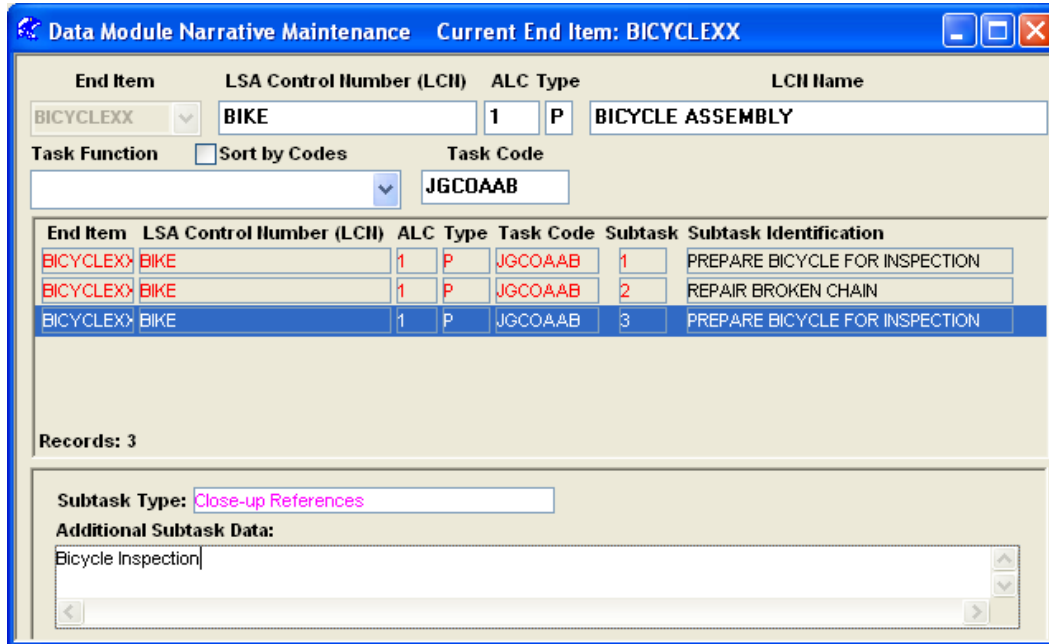


Figure 12. Data Module Narrative Maintenance Window – Required Conditions.

- In the Data Module Narrative Maintenance Window that remains, enter '*Bicycle Inspection*' in the Additional Subtask Data box as shown in Figure 12.
- Choose the **Save** button on the Main Toolbar.
- Close the Data Module Narrative Maintenance Window.

To add Requirements After Job Completion:

- In the Subtask Information Window, make sure the 'REPAIR BROKEN CHAIN' task is selected.
- Choose the **New Subtask** tab.
- Choose the **Enter as Last Subtask** radio button on the Subtask Information Window.
- Choose the **Reference an Existing Subtask** button on the Subtask Information Window. The Reference Subtask Finder is displayed.
- Enter '1' in the ALC search criterion box.
- Select 'A, Inspect' from the Task Function dropdown list.
- Choose the **Query** button on the Reference Subtask Finder.
- Select *any* subtask record with ALC of '1' and Task Code of 'AGCOCAA'.
- Choose the **OK** button on the Reference Subtask Finder.
- Select 'Close-up References (CLOSEREF)' from the Subtask Type (DMC Classification) dropdown list.
- Choose the **Save** button on the Main Toolbar.
- Close the Subtask Information Window.



**Data Module Narrative Maintenance** Current End Item: BICYCLEXX

End Item: BICYCLEXX LSA Control Number (LCN): BIKE ALC Type: 1 P LCN Name: BICYCLE ASSEMBLY

Task Function:  Sort by Codes Task Code: JGCOAAB

End Item	LSA Control Number (LCN)	ALC Type	Task Code	Subtask	Subtask Identification
BICYCLEXX	BIKE	1 P	JGCOAAB	1	PREPARE BICYCLE FOR INSPECTION
BICYCLEXX	BIKE	1 P	JGCOAAB	2	REPAIR BROKEN CHAIN
BICYCLEXX	BIKE	1 P	JGCOAAB	3	PREPARE BICYCLE FOR INSPECTION

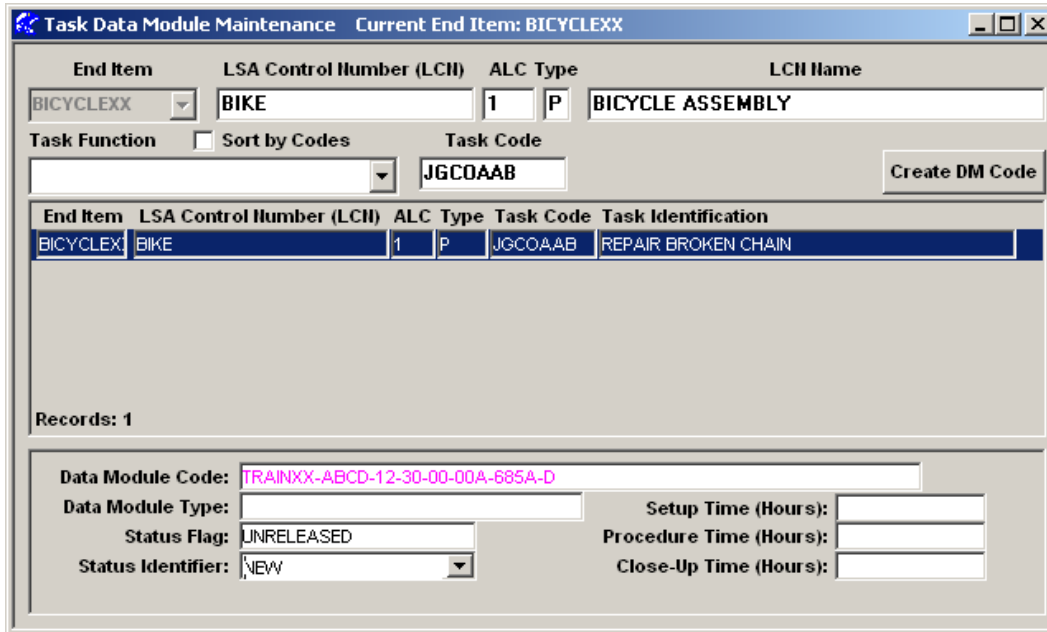
Records: 3

Subtask Type: Close-up References

Additional Subtask Data:  
Bicycle Inspection

Figure 13. Data Module Narrative Maintenance Window – Close up

- Select **Reports/Process>>Task Data Module (TDM) Narrative Maintenance** menu item.
- If you are using DEF STAN 00-60 V8 ELT, the Task/Subtask Associated Narrative Window is displayed. Close this window.
- In the Data Module Narrative Maintenance Window that remains (Figure 13), enter '*Bicycle Inspection*' in the Additional Subtask Data box.
- Choose the **Save** button on the Main Toolbar.
- Close the Data Module Narrative Maintenance Window.



**Task Data Module Maintenance** Current End Item: BICYCLEXX

End Item	LSA Control Number (LCN)	ALC Type	LCN Name
BICYCLEXX	BIKE	1 P	BICYCLE ASSEMBLY

Task Function  Sort by Codes Task Code: JGCOAAB Create DM Code

End Item	LSA Control Number (LCN)	ALC Type	Task Code	Task Identification
BICYCLEX	BIKE	1 P	JGCOAAB	REPAIR BROKEN CHAIN

Records: 1

Data Module Code: TRAINXX-ABCD-12-30-00-00A-685A-D

Data Module Type:

Status Flag: UNRELEASED

Status Identifier: NEW

Setup Time (Hours):

Procedure Time (Hours):

Close-Up Time (Hours):

Figure 14. Task Data Module Maintenance Window.

STEP Create a data module and link it to the task as follows:

- Select the record with LSA Control Number (LCN) of 'BIKE' and ALC of '01' in the Task Analysis Finder.
- Choose the **Reports/Process>>Task Data Module (TDM) Maintenance** menu entry. The Task Data Module Maintenance Window is displayed as shown in Figure 14. Figure 14 shown at the completion of this STEP.
- Make sure Task Code 'JGCOAAB' is displayed.
- Choose the **Create DM Code** button on the Task Data Module Maintenance Window. The Numbering System Manager is displayed as shown in Figure 15.
- Drill down through the Structure Navigator to build the DM Code as shown.
- Select '685' from the Information Code dropdown list box.
- Choose the **Add** button on the Numbering System Manager to create the DMC.
- Click **OK** to 'Asset added'.
- Select 'UNRELEASED' from the Status Flag dropdown list (See Figure 14).
- Select 'NEW' from the Status Identifier dropdown list (See Figure 14).

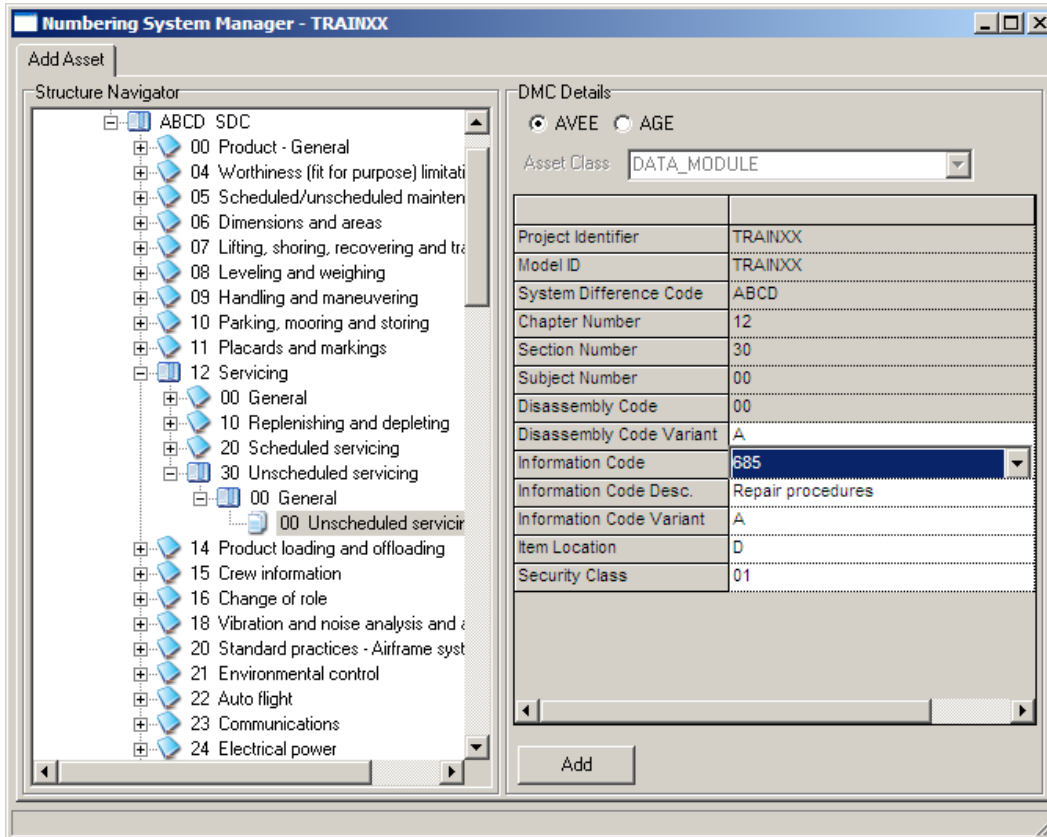


Figure 15. Numbering System Manager.

Note: If you are using DEF STAN 00-60 V8 ELT:

- Select 'SPEC 1000D COMPATIBLE DMC' from the Data Module Type dropdown list (See Figure 14).

If you are using V8 2B ELT

- Select 'AIR VEHICLE, ENGINES, AND AIRBORNE EQUIPMENT' from the Data Module Type dropdown list (See Figure 14).
- Choose the **Save** button on the Main Toolbar to link the DMC to the repair task.
- Close the Task Data Module Maintenance Window.

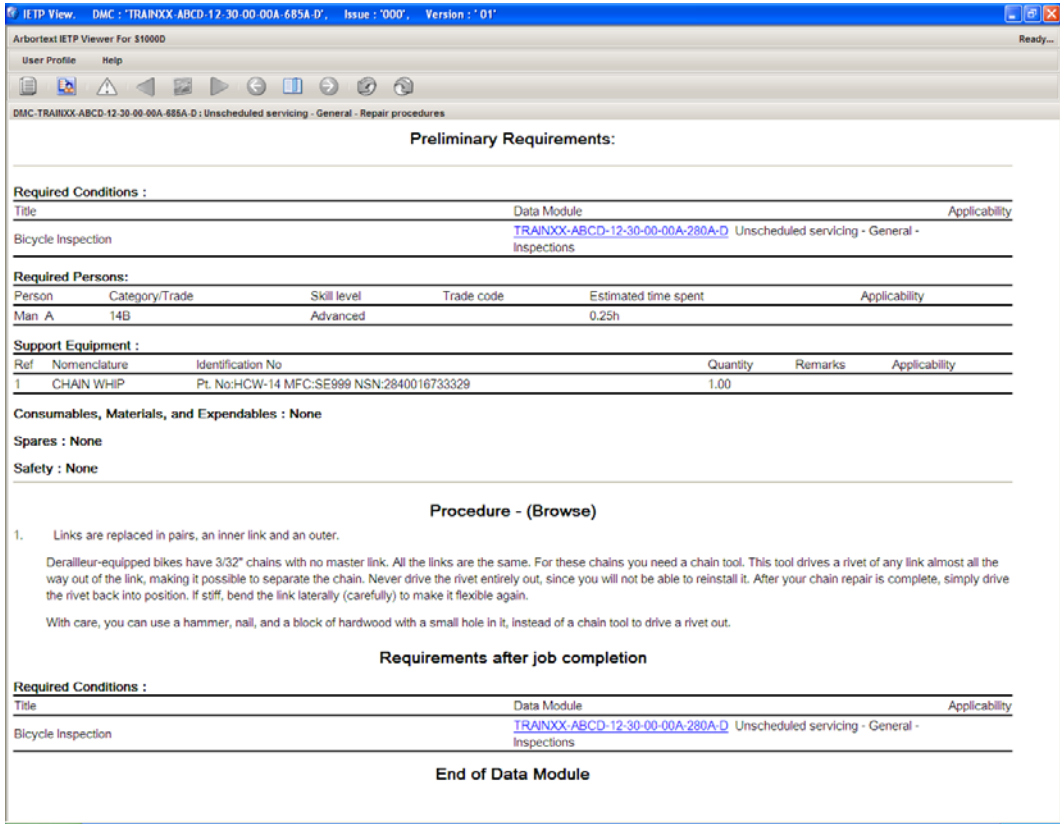



Figure 16. Preview of the Required Conditions in IETP View.

The required conditions and requirements after job completion created can be previewed as an IETP by releasing the data module in EAGLE, then in Arbortext CSDB for S1000D with the DMC selected, choosing the Preview IETP button (  ) on the Arbortext Main Toolbar. Figure 16 shows the data module in IETP View.

Note: When created in EAGLE, the DM Status in the Arbortext CSDB for S1000D is first 'Proposed'. To release the DM from EAGLE, you must acknowledge the DM in the CSDB which will in turn change the DM Pri-Status in the CSDB to Pending. This is done by right clicking on the DM in the CSDB DMRL and selecting Management>>Acknowledge DMC. Remember to Refresh and Allocate Author!!

### 1.0.3 Referencing Warnings, Cautions, And Notes Using The Inline W,C,N Subtask Type

The Inline W,C,N subtask type allows users to create warnings, cautions, and notes as individual subtask(S) that can be referenced into tasks where applicable. This enables the content of the subtasks to be edited in a single location, providing consistent wording for common warning, cautions, and notes.

Because ASD S1000D requires warnings, cautions, and notes to be tied to steps (warning, cautions, and notes are child elements of the step element in procedural data modules), special processing is required by the EAGLE data module release program to "roll" these warnings, cautions and notes into the following step. For this reason, subtasks with subtask type of Inline W,C,N must always be followed by a procedural subtask (or another Inline W,C,N).

The following exercises illustrate the use of the Inline W,C,N subtask type by:

- Creating a "dummy" task used as a library of standardized warnings, cautions; and notes;
- Creating a reference subtask in our bicycle inspection task with a subtask type of Inline W,C,N (INLINEWCN) to a subtask from the library task;

**STEP** Create a library task of standard warnings, cautions, and notes by performing the following steps. It is assumed the Task Analysis Finder remains open from paragraph 1.0.2.

- Select the record with LSA Control Number (LCN) of 'BIKE' and ALC of '01'.
- Choose the **Reports/Process>>View/Edit Task Information** menu entry.
- Choose the **New Task** tab.
- Enter 'WARNING, CAUTION, NOTE LIBRARY' in the Task Identification box.
- Enter '5KCOCAA' in the Task Code Box.
- Choose the **Done** button on the Task Information Window.
- Close the Task Information Window.
- Choose the **Reports/Process>>View/Edit Subtask Information** menu entry.
- Make sure the WARNING, CAUTION, NOTE LIBRARY task is selected.
- Make sure the **New Subtask** tab is selected.
- Enter 'CAUTION: DO NOT DAMAGE FRAME FINISH' in the Subtask Identification box.
- Choose the **Done** button on the Subtask Information Window.
- Close the Subtask Information Window.
- Choose the **Reports/Process>>View/Edit Narrative Information** menu entry.
- Make sure the task with Task Code of '5KCOCAA' and the subtask with subtask Identification of 'CAUTION: DO NOT DAMAGE FRAME FINISH' are selected.

Note: If Arbortext Editor was closed, re-launch and Login into the CSDB utilizing the AAI Tool.

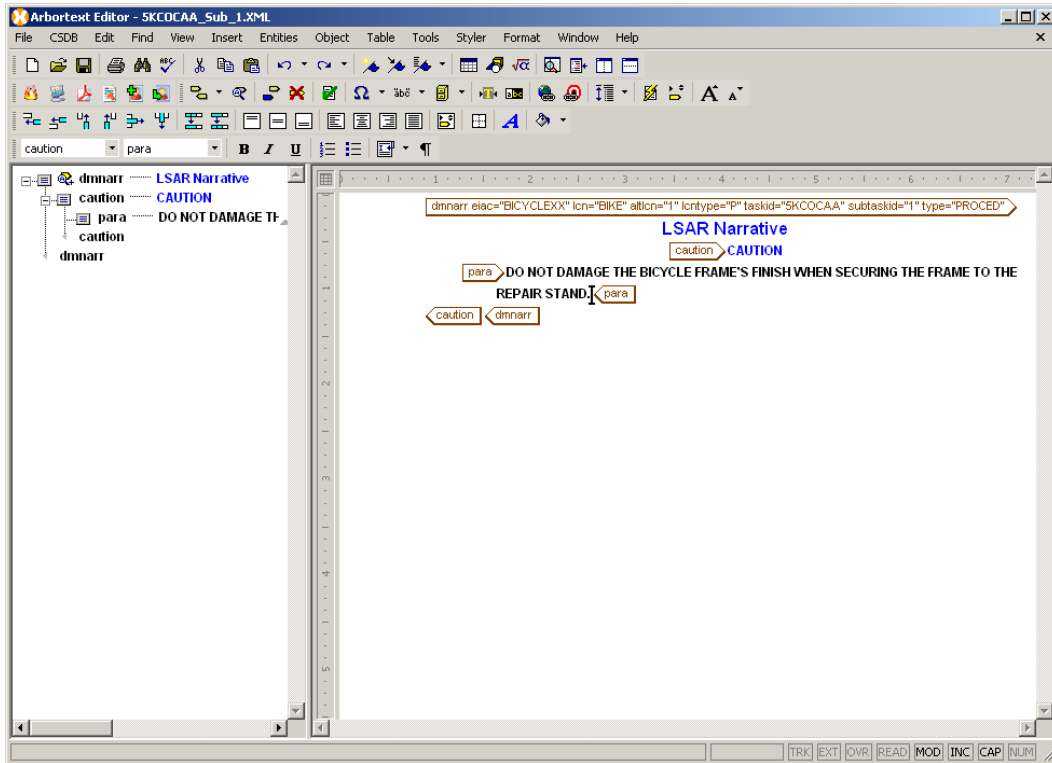



Figure 17. Caution Element Added.

- Choose the **Allow Editing** checkbox to launch the Arbortext Editor.
- Delete the <step1> element and all of its contents.
- With the cursor within the <dmnarr> element, choose the **Enter** key on the keyboard and click on the caution element.
- With the cursor inside of the <caution> element, choose the **Enter** key on the keyboard and click on the para element.
- Place the cursor within the <para> element and enter '*DO NOT DAMAGE THE BICYCLE FRAME'S FINISH WHEN SECURING THE FRAME TO THE REPAIR STAND.*'
- Choose the **Save** button (  ) on the Arbortext Editor Toolbar to save the tagged narrative.
- Choose the **Yes** button on the Save to Database Dialog Box (Figure 6) to complete the save.

- Choose the **OK** button to acknowledge that the subtask has been saved successfully (Figure 7).
- Close the document in the Artbortext Editor.
- Minimize the Arbortext Editor
- Close the EAGLE Narrative Editor window.

**STEP** To add the library reference to the bicycle inspection task:

- In the Task Analysis Finder, make sure the record with LSA Control Number (LCN) of 'BIKE' and ALC of '01' is selected.
- Choose the **Reports/Process>>View/Edit Subtask Information** menu entry.
- Select the 'INSPECT BICYCLE' Task with Task Code of 'AGCOCAA' from the Task Code dropdown list.
- Choose the **New Subtask** tab.
- Choose the **Enter BETWEEN Existing Subtasks** radio button.
- Choose the **Reference an Existing Subtask** button on the Subtask Information Window.
- Enter '1' in the ALC search criterion box.
- Select '5, Set up' from the Task Function dropdown list.
- Choose the **Query** button on the Reference Subtask Finder.
- Choose the **OK** button to select the subtask created in the previous exercise as the subtask to be referenced.
- Select 'Inline W,C,N (INLINEWCN)' from the Subtask Type dropdown list.
- Choose the **Done** button on the Subtask Information Window.
- Choose **OK** to acknowledge the Between Existing Subtasks Selected Dialog Box (Figure 18). The Subtask Renumber Window is displayed as shown in Figure 19.

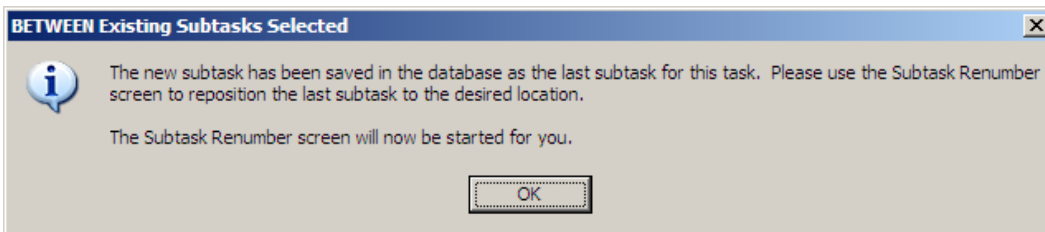


Figure 18. Between Existing Subtasks Selected Dialog Box.

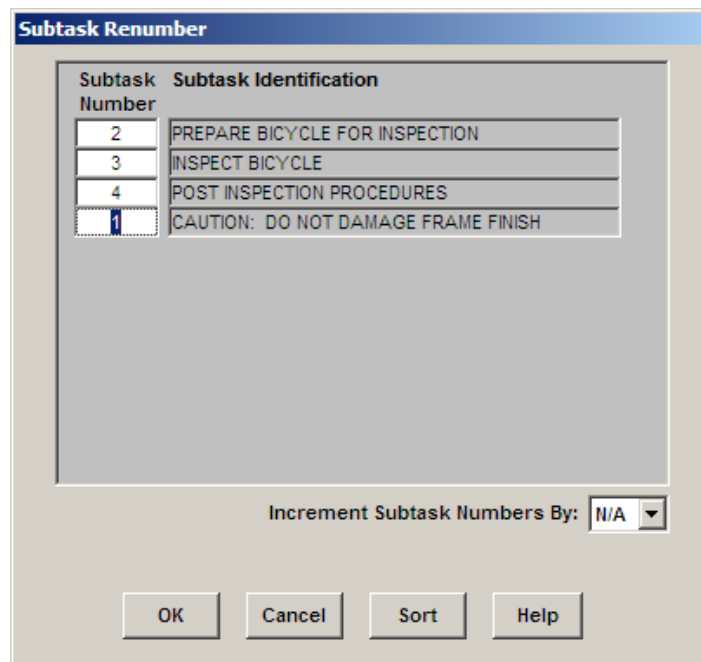


Figure 19. Subtask Renumber Window.

- Edit the Subtask Numbers as shown in Figure 19. (The CAUTION subtask should be the first subtask.)
- Choose the **OK** button to complete the addition of the inline caution.
- Close the Subtask Information Window.

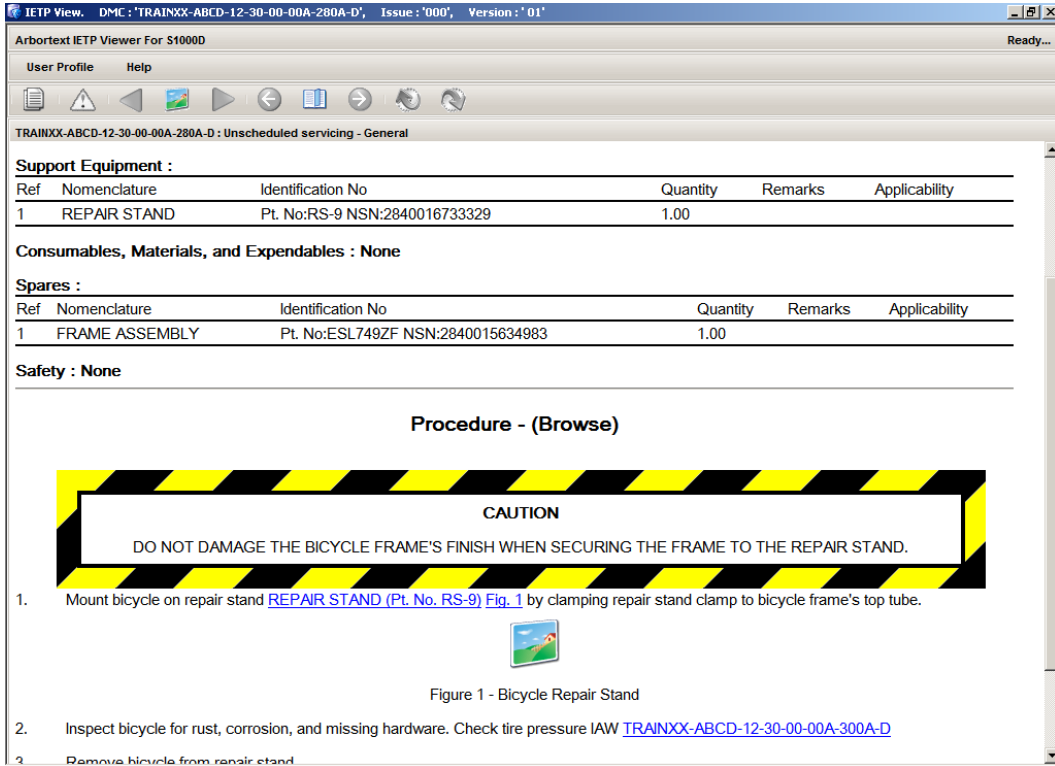



Figure 20. IETP Preview of Data Module Showing the Added Caution.

The added caution can be previewed as an IETP by releasing the data module in EAGLE, then in Arbortext CSDB with the DMC selected, choosing the Preview IETP button (  ) on the Arbortext CSDB Toolbar. Figure 20 shows the data module in IETP View.

Make sure your IETP View is as shown. Remember to Select correct DM, Refresh DMRL and DM.

#### 1.0.4 Adding Warning, Caution, and Note Subtask Types

Warning, Caution, and Note Subtask Types differ from the Inline W,C,N subtasks described in paragraph 1.0.3 in that these subtask types generate general alerts in the Safety section of a data module rather than warnings, cautions, or notes tied to a specific step.

The following exercises illustrate the use of warning, caution, and note subtask types. It is assumed the Task Analysis Finder remains open from paragraph 1.0.3.

The screenshot shows the 'Subtask Information' window for 'Current End Item: BICYCLEXX'. The window contains the following information:

- End Item:** BICYCLEXX
- LSA Control Number (LCN):** BIKE
- ALC Type:** 1 P
- LCN Name:** BICYCLE ASSEMBLY
- Data Module Code (DMC):** TRAINXX-ABCD-12-30-00-00A-280A-D
- Task Code:** AGCOCAA
- Task Identification:** INSPECT BICYCLE
- Subtask:** 1 SAFETY SUMMARY
- Subtask Information:**
  - Subtask Number: 1
  - Subtask Identification: SAFETY SUMMARY
  - Reference Subtask Used: NO
  - Subtask Type (DMC Classification): Warning Subtask (WARNING)
  - Subtask Mean Minute Elapsed Time: [Empty]
  - Work Area Code: [Empty]
  - Work Area Code (Zone): [Empty]
  - Work Area Code (Access): [Empty]
  - Drawings Linked To This Subtask: (Double-Click To View Drawing)
  - Drawing Number: [Empty]
  - REV: [Empty]


Figure 21. Subtask Information Window - SAFETY SUMMARY Subtask Added.

**STEP** Create a warning subtask as follows:

- In the Task Analysis Finder, make sure the record with LSA Control Number (LCN) of 'BIKE' and ALC of '01' is selected.
- Choose the **Reports/Process>>View/Edit Subtask Information** menu entry.
- Select the task with Task Code of 'AGCOCAA' from the Task Code dropdown list.

- Choose the **New Subtask** tab.
- Choose the **Enter as FIRST Subtask** radio button.
- Enter 'SAFETY SUMMARY' in the Subtask Identification box.
- Select 'Warning Subtask (WARNING)' from the Subtask Type (DMC Classification) dropdown.
- Choose the **Done** button on the Subtask Information Window. The warning subtask is added as shown in Figure 21.
- Close the Subtask Information Window.
- Choose the **Reports/Process>>View/Edit Narrative Information** menu entry. Make sure the task with Task Code of 'AGCOCAA' and Subtask with Subtask Identification of 'SAFETY SUMMARY' is selected.

Note: If Arbortext Editor was closed, re-launch and Login into the CSDB utilizing the AAI Tool.

- Choose the **Allow Editing** checkbox to launch the Arbortext Editor.
- Delete the <step1> element and all of its contents.
- With the cursor within the <dmnarr> element, choose the **Enter** key on the keyboard and click on the warning element.
- With the cursor inside of the <warning> element, choose the **Enter** key on the keyboard and click on the para element.
- Place the cursor within the <para> element and enter '*BICYCLE CONTAINS MOVING PARTS THAT CAN CAUSE INJURY IF CONTACT IS MADE WITH PERSONNEL. MAKE SURE ALL PARTS ARE AT REST BEFORE ATTEMPTING MAINTENANCE.*'
- Choose the **Save** button (  ) on the Arbortext Toolbar to save the tagged narrative.
- Choose the **Yes** button on the Save to Database Dialog Box (Figure 6) to complete the save.
- Choose the **OK** button to acknowledge that the subtask has been saved successfully (Figure 7).
- Close the document in the Arbortext Editor.
- Minimize the Arbortext Editor.
- The added narrative should be contained in the EAGLE Narrative Editor.
- Close the EAGLE Narrative Editor window.

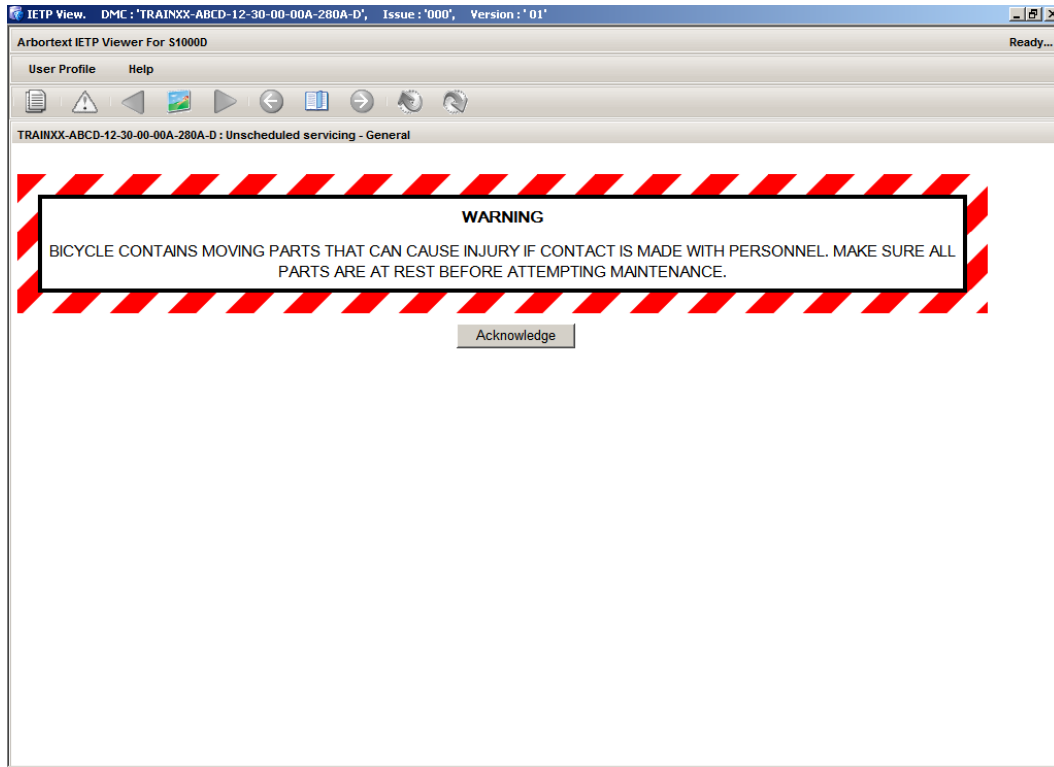



Figure 22. IETP Preview of Data Module Showing the Added Warning.

The added warning can be previewed as an IETP by releasing the data module, then in Arbortext CSDB with the DMC selected, choosing the Preview IETP button (  ) on the Arbortext CSDB Toolbar. Figure 22 shows the data module in IETP Preview.

Make sure your IETP View is as shown. Remember to Select correct DM, Refresh DMRL and DM.

